



Ramset™

Concrete Results™

www.itwasia.com



SPIT FIX II
Stud Anchor

SPIT FIX II

Spit Fix II stud anchor is a true to size, torque controlled expansion anchor with “pull down” capabilities for permanent anchoring into solid substract such as concrete.



FEATURES

New expansion sleeve

3 legs for a better expansion

6 lugs for a better fixing in concrete

zinc-coated expansion sleeve (high quality)

Improved efficiency

25% less hammer blows to install the anchor

20% less turns of the spanner to achieve full torque

New description

diameter x total length / maximum thickness of fixture

Example : FIX II 8x70/20

MATERIALS



concrete



- For non-cracked concrete

- conform to ETA

(European Technical Approval)

option 7: higher level for non-cracked

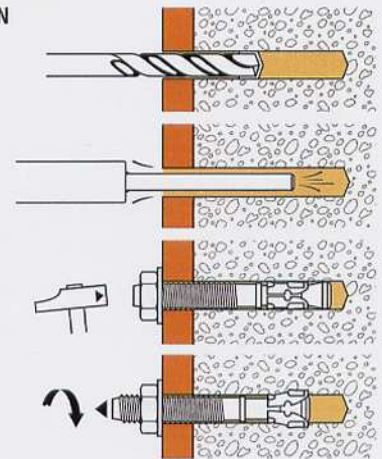
concrete



solid block



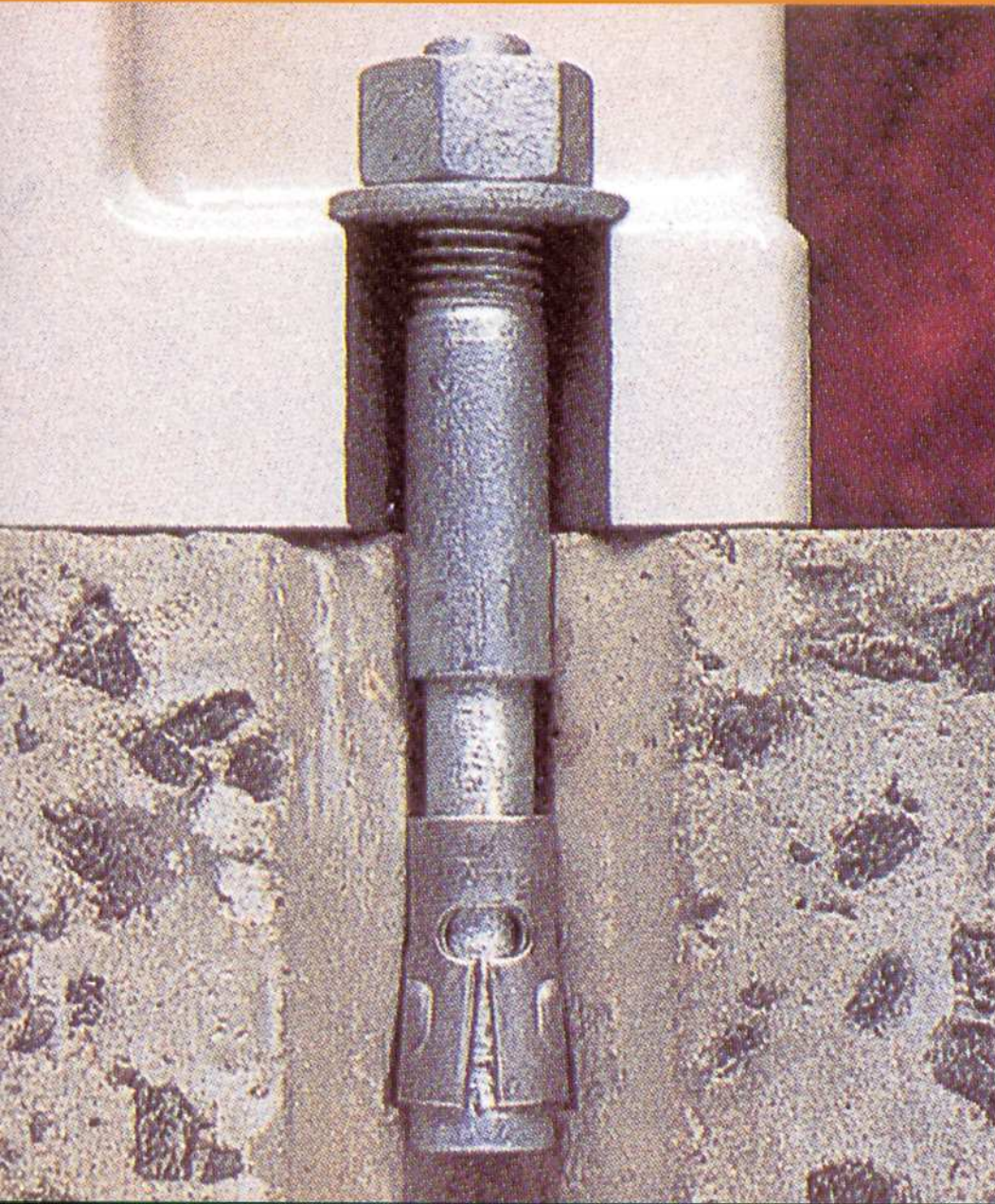
INSTALLATION



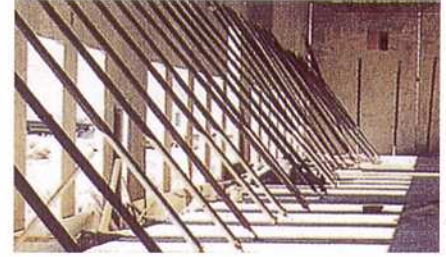
- Drill the hole to the required depth.
- Blow out the trapped dust.
- Hammer and install the anchor in hole.
- Apply tightening torque with torque wrench according to the diameter of anchor.

ANCHOR SIZE (mm)	INSTALLATION DETAILS								
	Anchor length, L (mm)	For fixtures up to, t _{fix} (mm)	Thread dia, d	Hole diameter, d _o (mm)	Min. anchor depth (mm)	Hole depth, h _L (mm)	Fixture hole diameter, d _f (mm)	Tight torque, T _{inst} (Nm)	Edge Distance C _{min} (mm)
M8x55/5-0	55	-	M8	8	48	55	9	15	60
M8x70/20-7	70	7							
M8x90/40-27	90	27							
M8x130/80-67	130	67							
M10x65/5-0	65	-	M10	10	52	60	12	30	65
M10x75/15-5	75	5							
M10x95/36-26	95	26							
M10x120/60-50	120	50							
M10x140/80-70	140	65	M12	12	68	78	14	50	75
M12x80/5-0	80	-							
M12x100/25-8	100	8							
M12x115/40-23	115	23							
M12x140/65-48	140	48	M16	16	86	100	18	100	100
M16x100/5-0	100	-							
M16x125/30-8	125	8							
M16x150/55-33	150	33							
M16x170/75-53	170	53	M20	20	100	115	22	160	125
M20x120/10-0	120	-							
M20x160/50-25	160	25							
M20x215/105-80	215	80							

Recommended Tension Load, N_{rec} (Factor of Safety on Load is 1.4 and on the Concrete is 1.8)
Recommended Shear Load, V_{rec} (Factor of Safety on the Steel is 1.4)



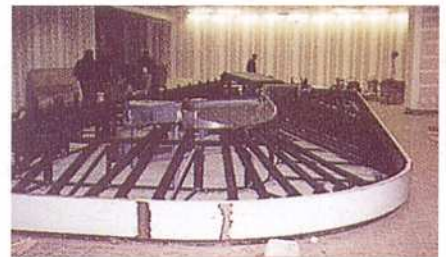
APPLICATIONS



Pre-cast panels are typically anchored to the concrete slab temporarily with Spit Fix anchors because of reliable performance and economical pricing.



Safety railings are commonly anchored with Spit Fix anchors because of availability in three material types for all corrosive atmospheres.



Anchoring machinery and conveyors is a common Spit Fix anchor application. Spit Fix is fully threaded to allow a large range of embedment and fixture thickness.

MINIMUM DIMENSIONS		RECOMMENDED LOAD (KN)				PART NO.		
Anchor spacing, S_{min} (mm)	Substrate thickness, h_{min} (mm)	Shear $V_{rec} > C20/25$	Tension, N_{rec}			Zinc Plated	Stainless Steel A4	Hot-dipped Galvanised
			Concrete compressive strength, f_c					
			25MPa	30MPa	37MPa			
50	100	2.7	6.6	7.3	8.1	T08055	T08055SS	
						T08070	T08070SS	
						T08090	T08090SS	T08090GH
						T08130	T08130SS	
55	104	8.0	7.5	8.3	9.2	T10065	T10065SS	
						T10075	T10075SS	
						T10095	T10095SS	T10095GH
						T10120	T10120SS	
75	136	13.0	11.2	12.3	13.7	T10140		
						T12080	T12080SS	
						T12100	T12100SS	T12100GH
						T12115	T12115SS	
90	172	13.5	15.9	17.5	19.4	T12140	T12140SS	T12140GH
						T16100		
						T16125	T16125SS	
						T16150	T16150SS	
105	200	35.0	20.0	22.0	24.4	T16170	T16170SS	T16170GH
						T20120		
						T20160		
						T20215		

Applications & Projects:



External cladding and steel structure were installed using Ramset anchors for Republic Polytechnic.



More than 100,000 pieces of stainless steel Ramset anchors were used for the external cladding of Monetary Authority of Singapore Building.



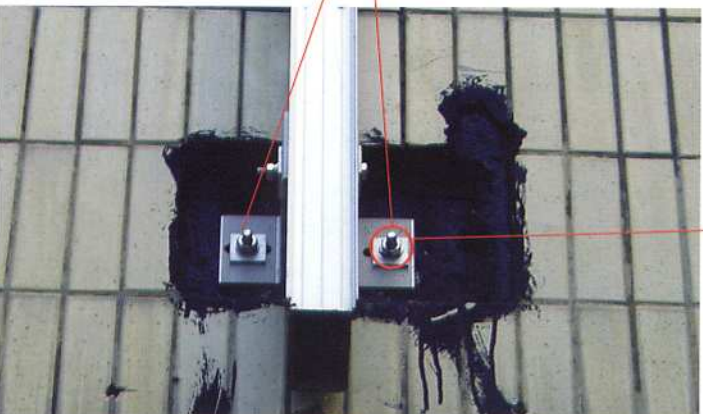
Ramset Anchors were used for the facade cladding of laminated marble glass veneer of The Supreme Court.



Mount Elizabeth Hospital & Medical Centre: before



Mount Elizabeth Hospital & Medical Centre: after



Brackets were installed using Ramset anchors for external cladding works of Mount Elizabeth Hospital & Medical Centre.



益力五金與工業供應私人有限公司
AIK LEE INDUSTRIES SUPPLY PTE LTD

8 Tuas Avenue 10 Singapore 639132

Construction - Tel: (65) 6744 1555 Fax: (65) 6744 9577 / (65) 6744 6922

Industrial - Tel: (65) 6560 0866 Fax: (65) 6560 9557 / (65) 6562 4737

www.aiklee.com.sg ✉ : sales@aiklee.com.sg

Brochure Reference Number: ITW06-006